

Questions and answers about the AirStop® tyre range.

What is the difference between an AirStop® tyre and a standard tyre?

A viscous compound inside the tyre protects your tyres against pressure loss. This does not noticeably affect the quality of the handling experience, rolling resistance or the service life in everyday use.

Do I need special wheels or other additional parts?

The tyres can be fitted on any standard wheel without any need for extra parts. We do, however, urgently recommend the use of these tyres in combination with a tyre pressure monitoring system.

Must a tyre be replaced after it has been punctured?

Yes. Even though you may not have noticed the puncture while driving, the system is not suitable as a long-term repair solution. It is intended only to ensure that you can drive safely to the nearest Volkswagen partner.

How can I tell if AirStop® tyres have already been fitted to my vehicle?

A note is made in the logbook of all vehicles for which factory-fitted AirStop® tyres are available. In addition, the tyre sidewalls display an appropriate code or name and/or the logo of the individual manufacturers of self-sealing tyres.



Your Benefits.

No break in the journey:

Even if the tread is damaged, AirStop® guarantees consistently stable vehicle handling characteristics with no need to reduce speed.

Effective protection for all four wheels:

Protection is assured, even when tread punctures occur simultaneously on more than one tyre.

Increased safety:

As sudden losses of tyre pressure (blowouts) can no longer occur, vehicle handling characteristics are not impaired.

Less time lost:

Unexpected delays due to tyre failures are almost completely avoided.

No additional effort required for retrofitting:

Tyres from the AirStop® range can be fitted on all standard wheels.

Consistent comfort and convenience:

There are hardly any differences in comfort, convenience and rolling resistance between AirStop® tyres and standard tyres.

Less weight and more space:

As no spare tyre is required, the overall vehicle weight is reduced and more space is available in the luggage compartment.

Find out more.

From your Volkswagen partner:

© Volkswagen AG

Group Genuine Parts and Service Division, Business Unit Tyres (K-VO-ST)

Letter Box 4955, P.O. box 1451

D-34219 Baunatal, Germany

AIRSTOP is a registered trademark inter alia in EU, CN, USA.

Volkswagen is using this trademark under license.

All rights reserved. Subject to technical modifications.

Version/Date: September 2015

Artikel-Nr. xxx.xxxx.xx.xx



Das Auto.

Less tyre damages. More mobility.

Volkswagen exclusive AirStop® tyre range.



Protection against the most frequent cause of breakdowns*

Increased safety for all wheels:

Drive safely to the closest Volkswagen dealership, even with a punctured tyre.

Less time lost:

Avoid unexpected delays.

Convenience at any time:

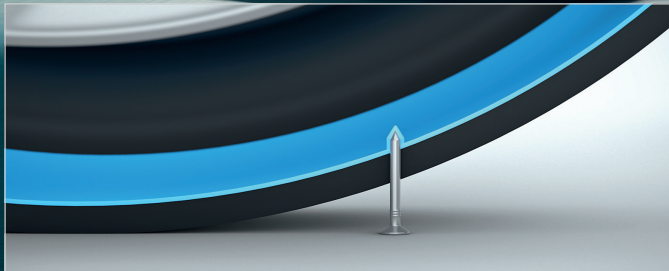
No disadvantages in comparison with standard tyres.

* Up to 5 mm penetration on the tyre tread.

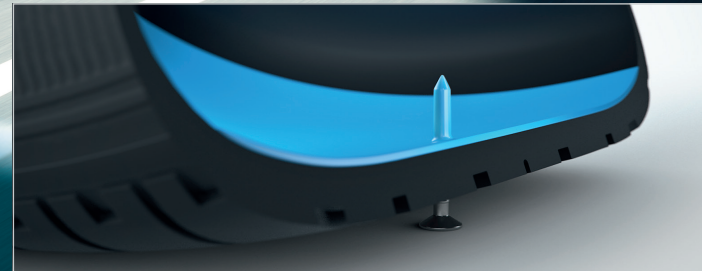
 AirStop®



This is how it works:



A special sealing compound inside the tyre ...



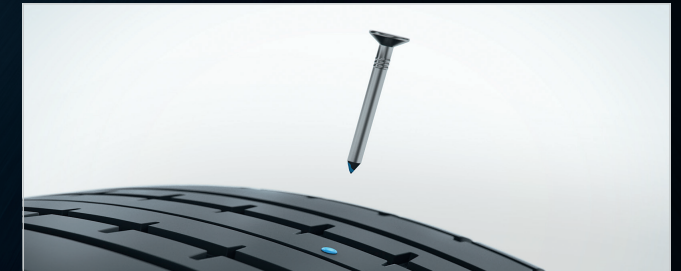
... encloses external objects up to 5 mm as soon as the object punctures the tyre, ...

Small leaks, no effect – Just keep on driving with AirStop® tyres.

Did you know that tyre damage is responsible for almost 25% of all breakdowns? Damage caused, in the majority of cases, by small punctures in the tyre tread. In view of this, we at Volkswagen have for the first time set a self-imposed brand standard for self-sealing tyres – the AirStop® tyre range.

This technology enables drivers to drive safely to their nearest Volkswagen partner after punctures in the tyre tread of up to 5 mm in diameter, as typically caused by nails. For you, this means: no restrictions in everyday driving situations and considerably fewer problems with punctures! AirStop® tyres ensure more mobility, are fitted more and more in serial production and are available in a numerous of replacement tyres.

Fuel consumption in l/100 km: combined, between 5.6 and 4.4,
CO₂ emissions in g/km: combined, between 129 and 115



... seals the puncture and allows to keep on driving safely to the closest Volkswagen dealership.

AirStop® – make your own comparison

	Repair kit	Spare wheel	Emergency systems (e.g. run-flat)	AirStop®
Mobility in the case of damage to multiple tyres	○	○	●	●
Appropriate driving speed possible	○	○	○	●
Low added weight	●	○	○	●
No immediate interruption to journey necessary	○	○	●	●

● Applicable for the AirStop® tyre range ● Applicable for other mobility solutions ○ Not applicable

Which models are already available with AirStop® tyres as a standard feature?

AirStop® tyres are already available as a standard feature for the Passat, Passat Estate, Passat Alltrack, Volkswagen CC, Volkswagen CC Dynamic Black, Volkswagen CC R line, Scirocco, Sharan, Golf VII and Touran.

More information can be found at www.volkswagen.com.